

TECHNICAL

# RESCUE

EMS, EXTRICATION, SAR, AQUATIC, ROPE, DIVE, TACTICAL & USAR

[www.trescue.com](http://www.trescue.com)



ISSUE  
63

## QuickCuts 3

by Richard Denham and Nick Appleton  
Rescue Skills Training Team, London Fire Brigade

If you are confronted with a vehicle on its roof then gaining sufficient access to the side of the vehicle is of paramount importance for casualty access and extrication.

# QUILL WING



The base of the B pillar can be large and require several cuts if you need to remove the side completely. Alternatively you can take advantage of the space above the vehicle to leave the pillar attached and fold it up above and out of the way.



## Step 1

Once the vehicle is fully stabilised burst the front door using spreaders. Move from the door's corner towards the lock especially if the door is weak and folds before opening



## Step 2

Once the door is opened you will need to cut through the top of the door in order to clear the ground when you open it completely





## Step 3

Fold up the top of the door and cut any internal check-strap if present



## Step 4

Now the door will open fully

## YOUR CHOICE OF STRUTS REALLY DOES MATTER!



*The most versatile rescue strut on the market:*



*LIFT - STABILISE - PUSH - DISPLACE - RAM*

**Res-Q-Jack®**  
Extrication Struts

**WWW.RES-Q-JACK.COM**

GLOBAL@RES-Q-JACK.COM

+1-607-739-1209



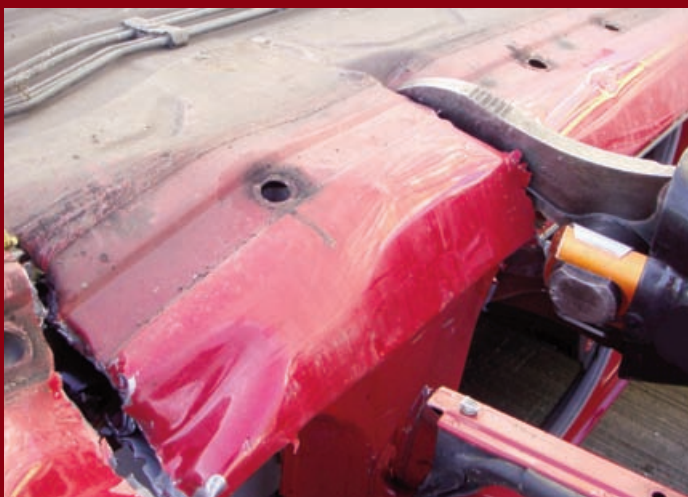
Repeat Steps 1 to 4 to open the rear door. Once this is done, remove all fascia and trim where the 'B' post joins the sill and check for gas generators or associated wiring or tubing. Carry out a risk assessment and implement control measures in accordance with your Brigade, Service or Department protocols and make the following cuts if safe to do so :

## Step 5



Make a deep relief cut in the sill at 90 degrees immediately behind the B pillar ensuring you cut through the sill completely.

## Step 6



Then make a further deep relief cut again at 90 degrees to the sill immediately in front of the B pillar again ensuring the cut is completely through the sill.

## Step 7





Now cut through the B pillar where it joins the roof

## Step 8



Lift up the door and post together

## Step 9



Then fold it up above and out of the way and secure with a ratchet strap

.....and that's the QuickCuts for the Gull Wing



## Step 10





### **Holmatro PowerShore™**

- One system for shoring and heavy lifting
- Up to 10.1 tons load/lifting capacity
- Also available with Auto-lock system enabling remote operation
- For light & heavy vehicle rescue, trench rescue and collapsed structure rescue

**The power to save lives**

 **holmatro**  
mastering power